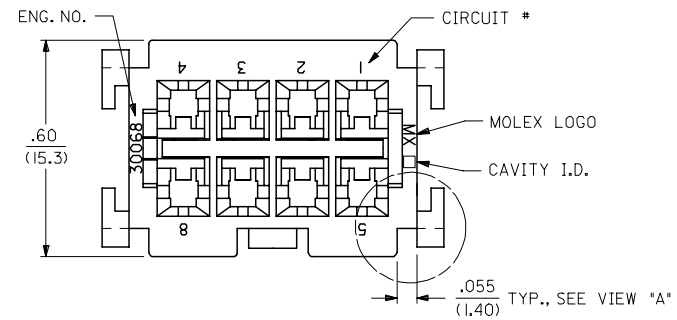
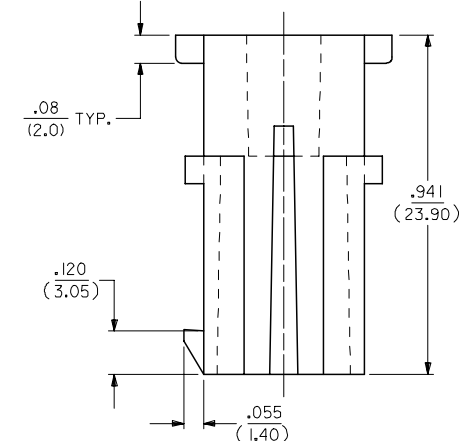
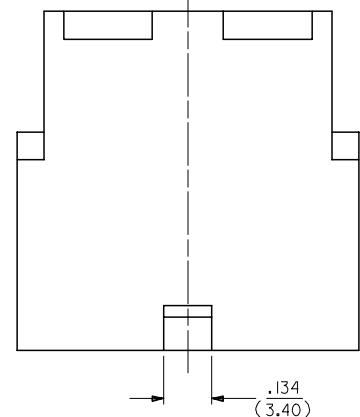
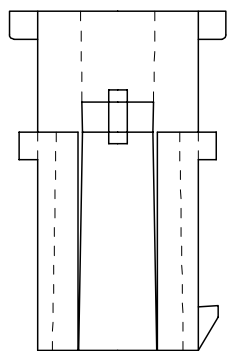


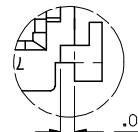
CKT. SIZE	ENG. NO.	EDP. NO.	DIM. "A" REF.	DIM. "B"
J	2	30068-2	15-97-6021	---- (.467 (11.86))
	4	30068-4	15-97-6041	.165 (4.20) (.467 (11.86))
	6	30068-6	15-97-6061	.331 (8.40) (.633 (16.08))
I	8	30068-8	15-97-6081	.496 (12.60) (.798 (20.27))
	10	30068-10	15-97-6101	.661 (16.80) (.963 (24.46))
	14	30068-14	NOT TOOLED	.992 (25.20) (1.294 (32.87))
H	16	30068-16	15-97-6161	1.157 (29.40) (1.459 (37.06))
SEE SHT. 2 FOR 18 THRU 24 CKT'S.				



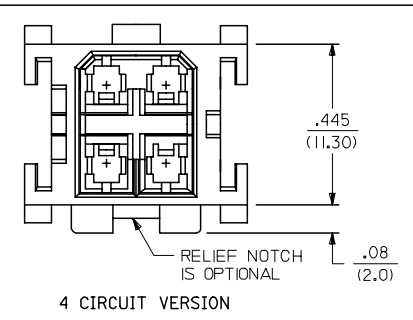
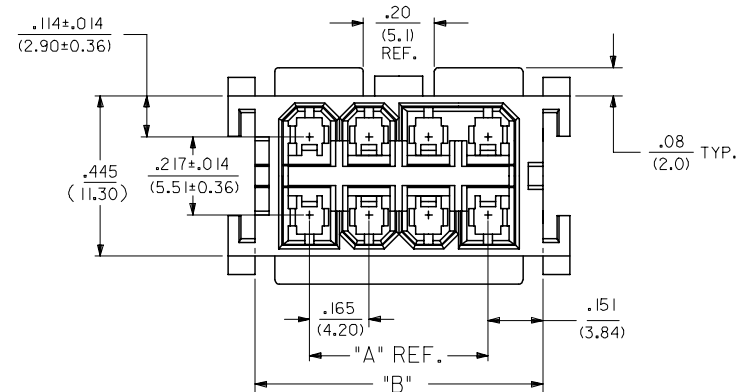
- NOTES:
1. MATERIAL: UNFILLED POLYESTER, U.L. 94V-0, COLOR: BLACK
  2. FINISH: N/A
  3. PRODUCT SPECIFICATION: PS-5556-003
  4. PACKAGING: BULK
  5. HOUSING TO BE USED WITH TERMINAL #5558.
  6. HOUSING MATES WITH RECEPTACLE #30067
  7. 2 THRU 10 AND 14 THRU 24 CKT. HOUSING TO BE USED WITH T.P.A. NO. 30072-\*, 12 CKT. HOUSING TO BE USED WITH T.P.A. NO. 43568-12\*. REFER TO DRAWING SDMS-30068-1\* FOR ADDITIONAL INFORMATION.
  8. PART CONFORMS TO CLASS "B" REQUIREMENTS OF COSMETIC SPECIFICATION PS-45499-002.



**LEGEND:**  
30068 - \*  
CIRCUIT SIZE (2-24)



**VIEW "A"**  
.04 (1.0) ON 6, 12 & 16 CKT. PARTS ONLY.

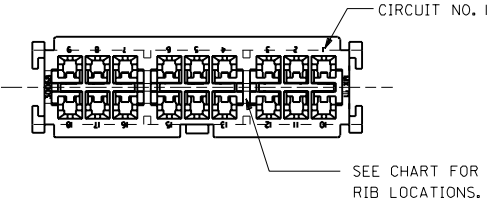


SEE SHT. #3 FOR PARTS WITH MOUNTING EARS

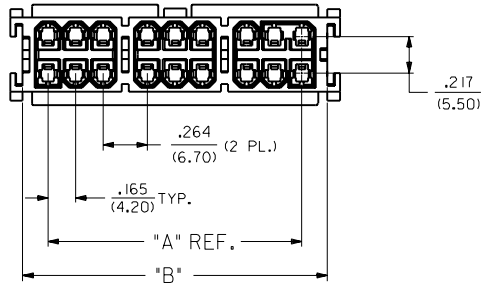
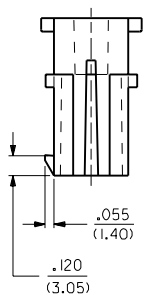
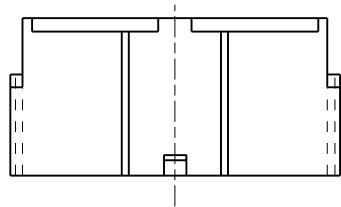
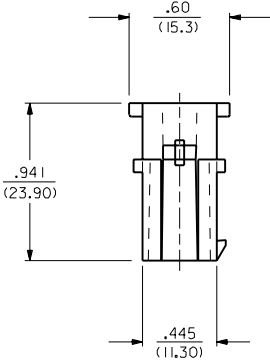
3	A
2	P1
1	R2
	SHEET REV

UPDATE 4 CKT VIEW EC NO: UCP2007-1573 DRWN:LSCHMIDT 2006/12/28 CHKD:ADERR 2007/01/09 APPR:FSM TH 2007/01/10 R2	QUALITY SYMBOLS 	GENERAL TOLERANCES (UNLESS SPECIFIED) <table border="1"> <thead> <tr> <th></th> <th>mm</th> <th>INCH</th> </tr> </thead> <tbody> <tr> <td>4 PLACES</td> <td>± .010</td> <td>± .0004</td> </tr> <tr> <td>3 PLACES</td> <td>± .015</td> <td>± .0006</td> </tr> <tr> <td>2 PLACES</td> <td>± 0.25</td> <td>± .010</td> </tr> <tr> <td>1 PLACE</td> <td>± 0.36</td> <td>± .014</td> </tr> </tbody> </table>		mm	INCH	4 PLACES	± .010	± .0004	3 PLACES	± .015	± .0006	2 PLACES	± 0.25	± .010	1 PLACE	± 0.36	± .014	DIMENSION STYLE IN/MM	SCALE 4:1	DESIGN UNITS METRIC	THIRD ANGLE PROJECTION
		mm	INCH																		
	4 PLACES	± .010	± .0004																		
	3 PLACES	± .015	± .0006																		
2 PLACES	± 0.25	± .010																			
1 PLACE	± 0.36	± .014																			
DRAFT WHERE APPLICABLE MUST REMAIN WITHIN DIMENSIONS		DRAWN BY DMF	DATE 1989/10/26	CHECKED BY TGP	DATE 1989/10/26	APPROVED BY SC	DATE 1989/10/26														
MATERIAL NO. SEE CHART		DOCUMENT NO. SD-30068-*		MOLEX INCORPORATED		SHEET NO. 1 OF 3															
THIS DRAWING CONTAINS INFORMATION THAT IS PROPRIETARY TO MOLEX INCORPORATED AND SHOULD NOT BE USED WITHOUT WRITTEN PERMISSION																					

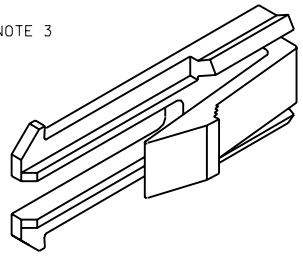
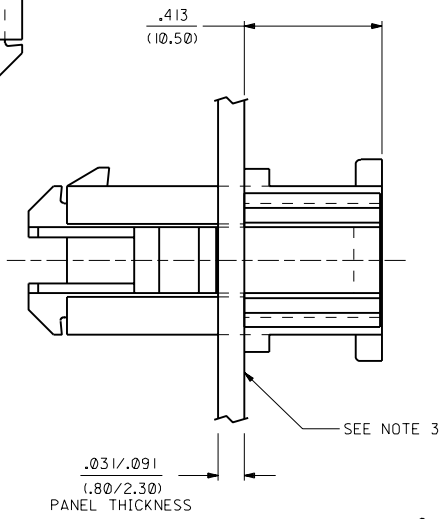
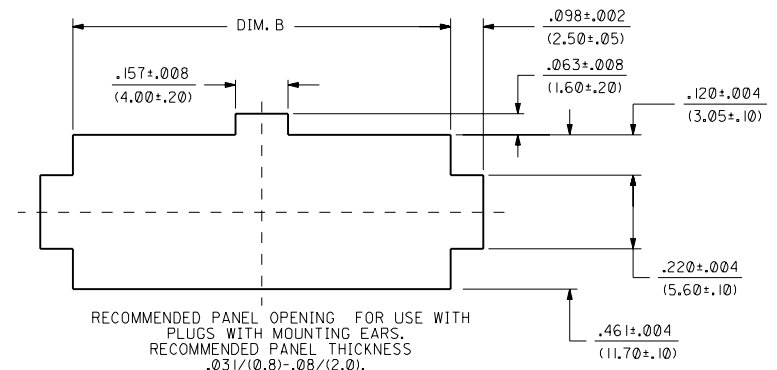
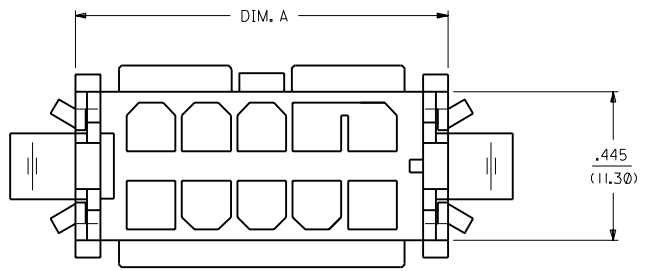
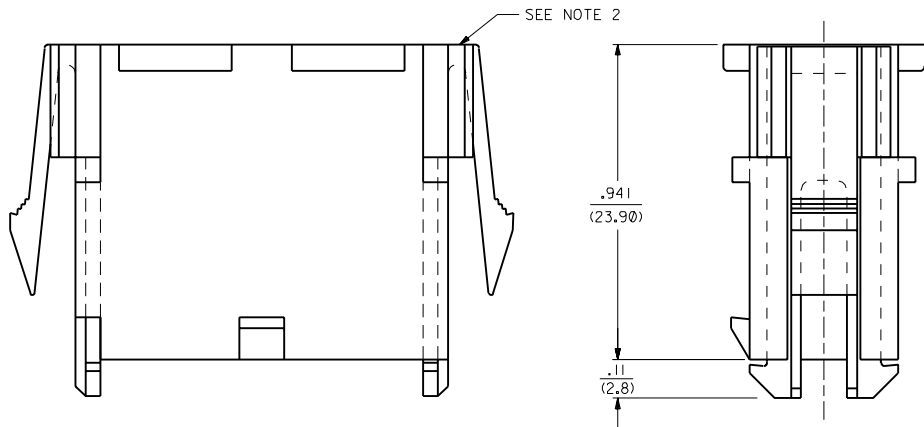
CKT. NO.	ENG. NO.	PART NO.	DIM." A"	DIM." B"	RIBS LOCATED BETWEEN CKT'S.
18	30068-18	NOT TOOLED	1.520 (38.60)	1.822 (46.28)	3,4 & 6,7
20	30068-20	NOT TOOLED	1.685 (42.80)	1.987 (50.46)	3,4 & 7,8
22	30068-22	NOT TOOLED	1.850 (47.00)	2.152 (54.66)	4,5 & 7,8
24	30068-24	NOT TOOLED	2.016 (51.20)	2.318 (58.88)	4,5 & 8,9
SEE SHT. I FOR 2 THRU 16 CKT'S.					



LEGEND:  
 30068 - \*  
 CIRCUIT SIZE (18-24)



DIMENSIONS SHOWN (METRIC) INCH		UNLESS OTHERWISE SPECIFIED TOLERANCES: ANGULAR ± 1/2°		REVISIONS		REVISIONS		DRAWING INFORMATION		TITLE		PART NO.		DATE	
PI	SEE SHEET # 1	INCH	METRIC	3 PLACE	± .010	---	---	2 PLACE	± .014	± 0.25	MINI-FIT T.P.A. PLUG HOUSING 2 THRU 24 CIRCUITS, WITH OR WITHOUT MOUNTING EARS.		MOLEX INCORPORATED		SHEET NO. 2
NI	SEE SHT. 1	1 PLACE	---	± 0.36	DRAFT WHERE APPLICABLE MUST REMAIN WITHIN DIMENSIONS		DRG. NO. RAS		DRG. BY: CEP	CHKD. BY: RJF	FILE NAME: 530068X2	THIS DRAWING CONTAINS INFORMATION THAT IS PROPRIETARY TO MOLEX INC. AND SHOULD NOT BE USED WITHOUT WRITTEN PERMISSION.		DATE: 1/10/92	REV. CP
N	SEE SHT. 1	SCALE: 2:1		SEE CHART		SD-30068-*		LTR.		LTR.		DIV.		SIZE	



NUMBER OF CIRCUITS	DIM. A	DIM. B
2	.617 (15.67)	.634 (16.10)
4	.617 (15.67)	.634 (16.10)
6	.783 (19.89)	.799 (20.30)
8	.948 (24.08)	.965 (24.50)
10	1.113 (28.27)	1.130 (28.70)
12	1.279 (32.49)	1.295 (32.90)
14	1.444 (36.68)	1.461 (37.10)
16	1.609 (40.87)	1.626 (41.30)
18	1.972 (50.09)	1.988 (50.50)
20	2.137 (54.28)	2.154 (54.70)
22	2.303 (58.50)	2.319 (58.90)
24	2.468 (62.69)	2.484 (63.10)

**NOTES:**

- 1) MOUNTING EAR MATERIAL: INFILLED POLYESTER, P.B.T., COLOR: BLACK.
- 2) MOUNTING EARS TO BE INSERTED INTO SIDE SLOTS FROM BACK OF HOUSING.
- 3) HOUSING ASSEMBLY TO BE INSERTED FROM PUNCH SIDE OF PANEL.
- 4) REFER TO DRAWING SDMS-30068-2\* FOR TPA & MOUNTING EAR KIT INFORMATION

DIMENSIONS SHOWN METRIC (INCH)		UNLESS OTHERWISE SPECIFIED TOLERANCES: ANGULAR ± 1/2°		REVISIONS ONLY ON CAD SYSTEM	
INCH		METRIC		TITLE	
3 PLACE	± .010	---	---	MINI-FIT T.P.A. PLUG HOUSING	
2 PLACE	± .015	± 0.25	---	2 THRU 24 CIRCUITS, WITH OR	
1 PLACE	---	± 0.38	---	WITHOUT MOUNTING EARS.	
DRAFT WHERE APPLICABLE MUST REMAIN WITHIN DIMENSIONS				PART NO. DATE	
DRG. BY LEM				DRG. NO. SD-30068-*	
APP'D BY RRE				FILE NAME 530068.DWG	
SCALE 4:1				SHEET NO. 3	
LTR. REVISIONS				DATE 99/04/22	
SEE SHEET #1				MOLEX INCORPORATED	
LTR. REVISIONS				L15LEJLL 60532 U.S.A.	
LTR. REVISIONS				SIZE CP	